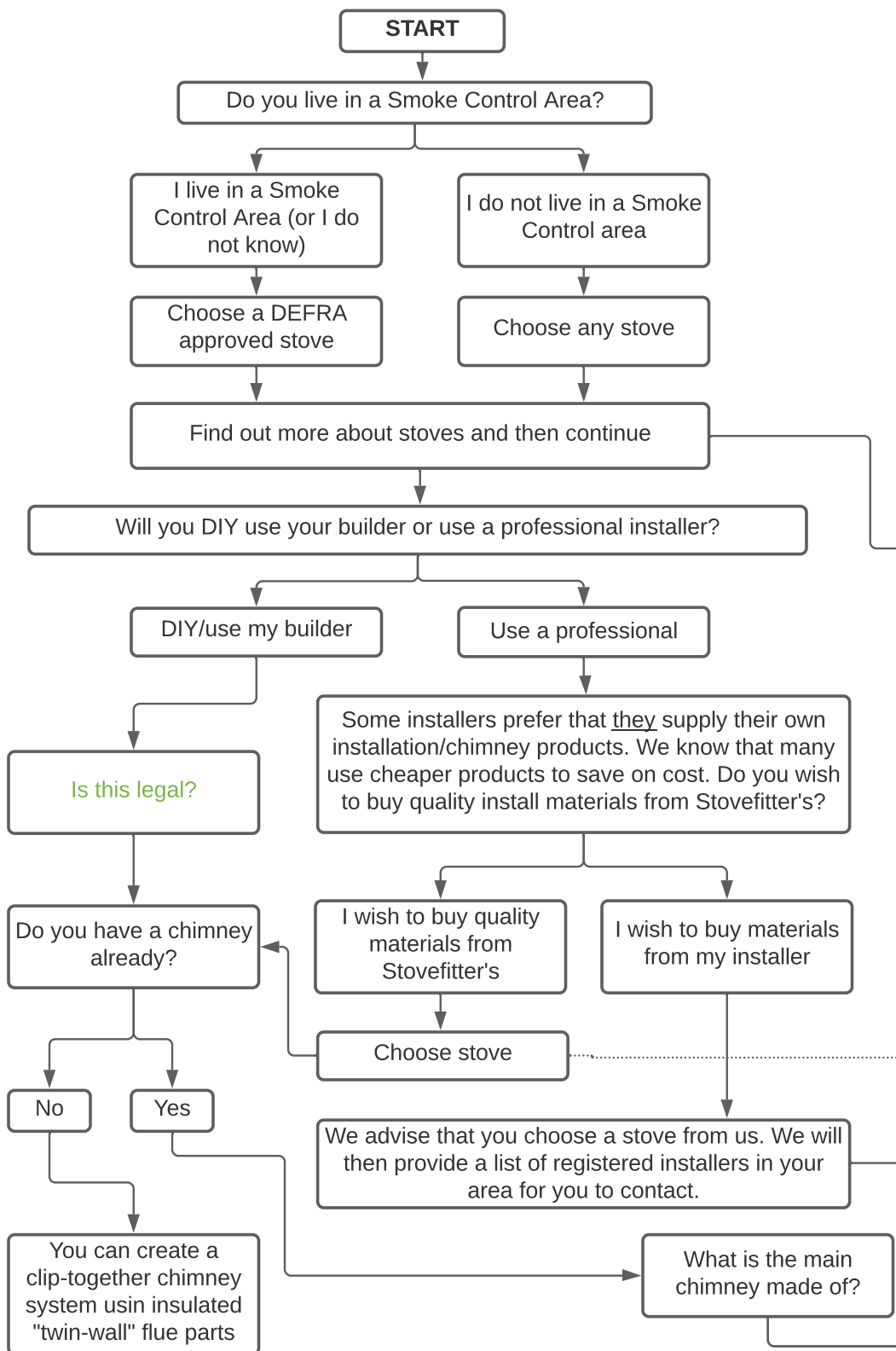


TREE OF KNOWLEDGE

STOVEFITTER'S

real fires, real help, real fast

The Stovefitter's Manual



Buying a stove

Installers
Best 5kW stoves (80% of our sales from these 10 stoves)
All stoves
Choosing a stove (infographic)
What size stove?
Wood-burning or Multifuel stove?
Tiny stoves for sheds, garages etc.
Terminology
Chinese stoves?
DEFRA stoves explained
Ecodesign explained
Do I need an air vet in my wall?
10 reasons to own a stove
Wood stoves, the environment & health
Costs involved



FREE DELIVERY (if below Edinburgh & not over water).

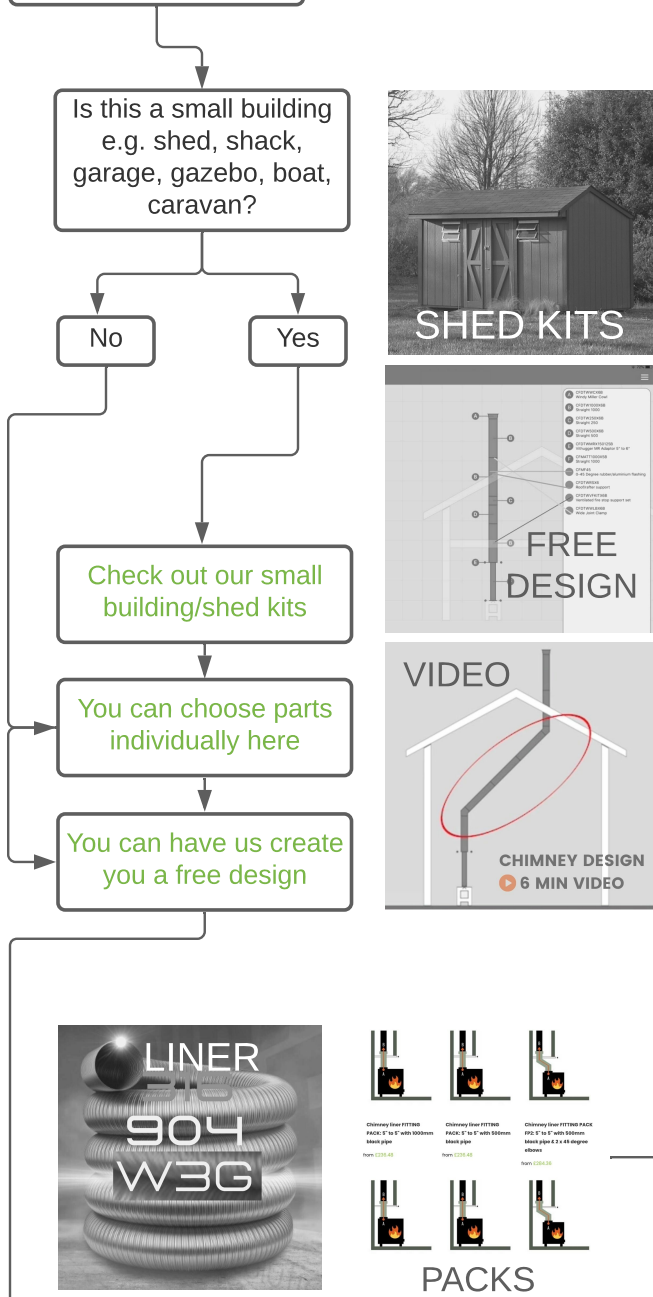
DELIVERY INFORMATION

If you do not wish to read any of the above articles then just jump straight to "our bestsellers"

The stoves on [our bestsellers](#) page are our top dozen or so best-sellers for a typical UK lounge size and they represent 80% of our sales. All are DEFRA approved, all meet Ecodesign standards, all can go on a 5" chimney and all (except the Arundel) can sit on a 12mm thick hearth.

Terminology

What does DEFRA-approved mean? Ecodesign? What is vitreous pipe?
[Find out here](#)

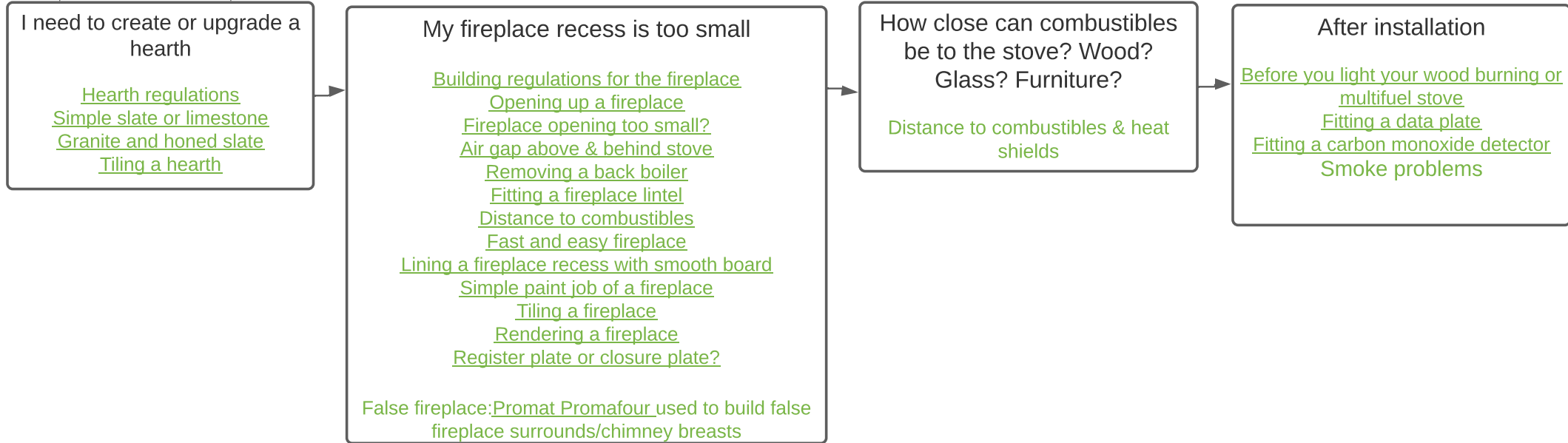
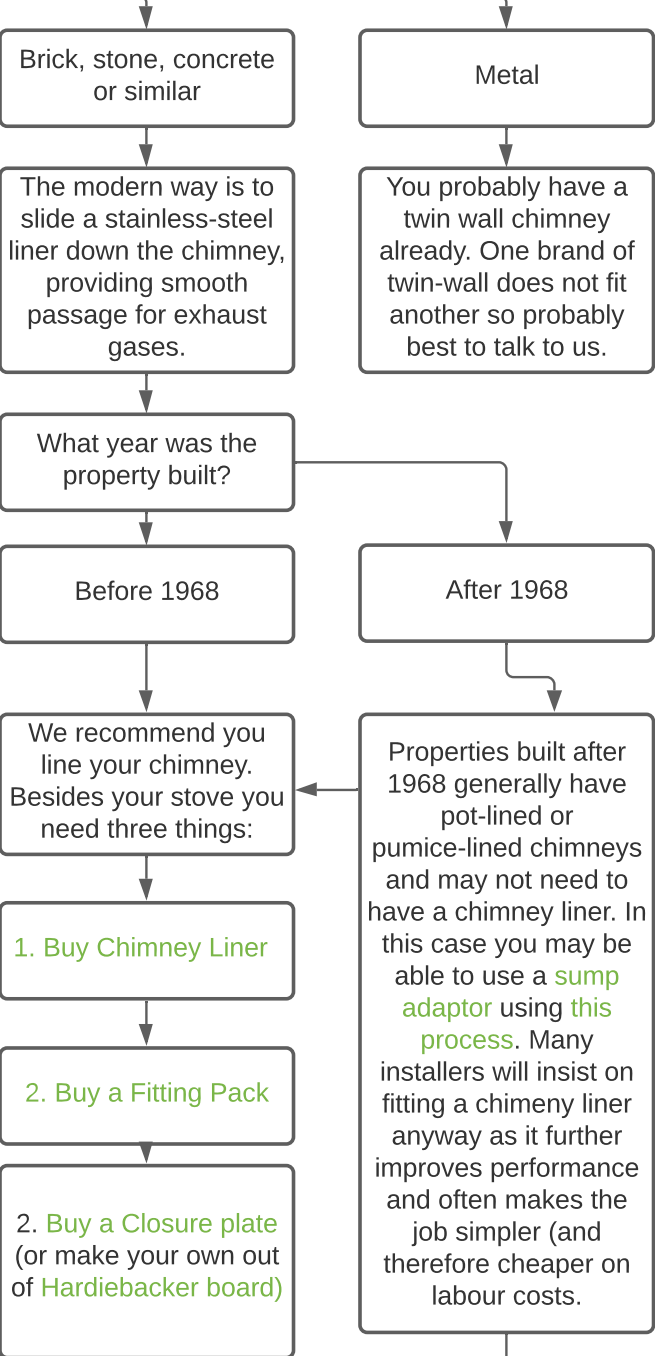


< Clip-together chimneys

No chimney, no problem
Let us design your clip-together chimney
Regulations inc. 6-minute design rules video
Clip-together chimney parts
How to install
Distance to combustibles
Conservatories
Chimney stack ends in loft (somebody took it down)
Bypassing a wooden beam
Example twin wall job: off back of stove, outside building
Example twin wall job: off top of stove, outside building
Example twin wall job: off top of stove, internal in building

Chimney lining >

[What is chimney liner \(flue liner\)?](#)
[Do I need to line my chimney?](#)
[Can I, should I, fit a 5" chimney liner?](#)
[What grade of chimney liner? 316 or 904?](#)
[How much liner in metres should I order?](#)
[Should I insulate my chimney liner?](#)
[How to line a chimney with chimney liner](#)
[Fitting a chimney liner to a pot or cowl](#)
[Chimney stack ends in a loft \(somebody took it down\)](#)
[Access and safety: quick-build platform ideas](#)
[Stove to flue to adaptor to liner](#)
[Connecting a wood burning stove to a liner, inside fireplace opening \(fitting a closure plate\)](#)
[Connected to liner, outside fireplace opening](#)
[Distance to combustibles](#)
[Fitting a chimney pot](#)



How can we improve this Knowledge Tree? Anything missing? Email: juliandavidpatrick@gmail.com

Stovefitter's Warehouse

Phone: 01492 535 852

Text: 07520 635 388

Live Chat (on site)

Email: info@stovefitterswarehouse.co.uk

<https://www.stovefitterswarehouse.co.uk/>